



Wentworth Care
FURNITURE

Ideal for Aged Care,
retirement homes
& supported living

REDEFINING SUSTAINABLE GARDENING

Water Savings Healthier Plants

Wicking Planter Boxes provide all the benefits of wicking bed solutions which require 80% less watering than top down methods, while producing at least 30% more yield.

It provides the optimal growing environment, saving you watering time. It can also capture and store rainwater and prevent root rot.



Cultivating happiness - the positive impact of gardening for aged care residents.

Wicking Planter boxes.

Gardening is a much loved activity for many that brings joy, peace, and a sense of accomplishment. For aged care residents, especially those living with dementia, gardening can be particularly therapeutic. Introducing a wicking planter box can offer numerous benefits, enhancing their quality of life in various ways.

Our Wicking planter boxes are versatile and can be adapted to fit different spaces within an aged care facility. Whether it's a small balcony, a courtyard, or an indoor space with adequate lighting, these planter boxes can be placed anywhere, making gardening accessible to all residents. Available on castors, these can be moved to capture the sun or the shade as required.

Incorporating wicking planter boxes into an aged care facility offers numerous therapeutic benefits including those living with dementia. From cognitive and physical health improvements to social engagement and stress reduction, these planter boxes provide a practical and enjoyable way for residents to connect with nature and participate in tasks they used to enjoy. By simplifying the gardening process, wicking planter boxes make it easier for residents to reap the rewards of this fulfilling activity, fostering a sense of purpose, accomplishment, and well-being.

- Promotes cognitive stimulation
- Enhances physical health
- Reduces stress and anxiety
- Encourages social interaction
- Provides a sense of purpose and accomplishment
- Wicking ensures consistent plant care
- The wicking planter boxes adapt to various spaces and the angled option allows for chair and wheelchair access.



This Australian Registered Designs wicking planter box allows closer access to the front by it's unique tapering leg and front panel. This angle is available on one side or both sides.



Sizes and Models

3-Wicking Cells - Angle One Side

125cm L x 80cm W x 80cm H

3-Wicking Cells Angle Both Sides

125cm L x 100cm W x 80cm H

5-Wicking Cells - Angle One Side (not available with wheels)

205cm L x 80cm W x 80cm H

5-Cells - Angle Both Sides (not available with wheels)

205cm L x 100cm W x 80cm H

What's included:

- 1 x Planter Box
- 1 x Wicking Kit
- 1 x Assembly Guide

Feet Options

Standard:

60mm round steel feet

Optional Wheels (125cm model only)

10cm Heavy duty wheels - lockable on front



Drawings & Box Sizes - Incare Collection

Available fully assembled or flat packed for onsite assembly



3-Cell Incare Single-Sided range Eco Board Wicking planter box

Shipping Box Sizes - 3-Cell Incare range Eco Board Wicking planter box

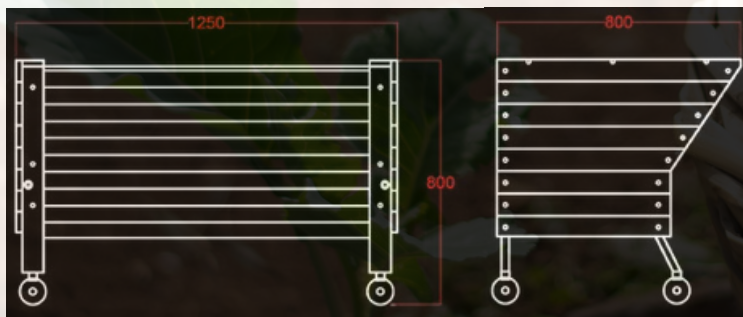
- 1x 12kgs 125cm x 55cm x 18cm
- 2x 15kgs 85cm x 85cm x 12cm
- 1x 10kgs 42cm x 42cm x 42cm



3-Cell Incare Double-Sided range Eco Board Wicking planter box

Shipping Box Sizes - 3-Cell Incare Double-Sided range Eco Board Wicking planter box

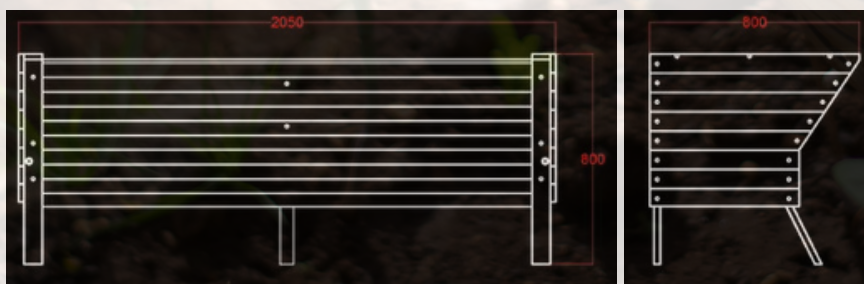
- 1x 12kgs 125cm x 55cm x 18cm
- 2x 18kgs 111cm x 85cm x 12cm
- 1x 10kgs 42cm x 42cm x 42cm



3-Cell Incare range Eco Board Wicking planter box with Wheels

Shipping Box Sizes - 3-Cell Incare range Eco Board Wicking planter box with Wheels

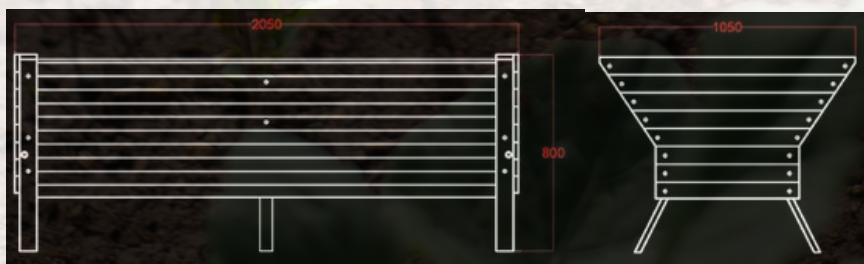
- 1x 12kgs 125cm x 55cm x 18cm
- 2x 17kgs 85cm x 85cm x 12cm
- 1x 10kgs 42cm x 42cm x 42cm



5-Cell Incare range Eco Board Wicking planter box

Shipping Box Sizes - 5-Cell Incare range Eco Board Wicking planter box

- 1x 22kgs 210cm x 55cm x 18cm
- 2x 15kgs 85cm x 85cm x 12cm
- 1x 11kgs 42cm x 42cm x 42cm



5-Cell Incare Double Sided range Eco Board Wicking planter box

Shipping Box Sizes - 5-Cell Incare Double Sided range Eco Board Wicking planter box

- 1x 22kgs 210cm x 55cm x 18cm
- 2x 18kgs 111cm x 85cm x 12cm
- 1x 11kgs 42cm x 42cm x 42cm

Artesian Range

The Artesian collection has straight legs



3-Cells with optional wheels



Sizes and Models

3-Cells (3 long)

125cm L x 55cm W x 51cm H

4-Cells (2 long, 2 wide)

85cm L x 91cm W x 51cm H

5-Cells (5 long)

205cm L x 55cm W x 51cm H

8-Cells (not available with wheels)

165cm L x 91cm W x 51cm H

What's included:

- 1 x Planter Box
- 1 x Wicking Kit
- 1 x Assembly Guide



5-Cells

Feet Options

Standard model

50mm rubber screw in feet

Optional Extras

10cm Heavy duty wheels - lockable on front



8-Cells 4 + 4

Drawings & Box Sizes - Artesian Collection



3-Cell Artesian range Eco Board Wicking planter box

Shipping Box Sizes - 3 Cell With Feet

- 1x 18kgs 60cm x 55cm x 13cm
- 1x 9kgs 128cm x 45cm x 13cm
- 1x 6kgs 48cm x 48cm x 43cm **Shipping**

Box Sizes - 3 Cell With Wheels

- 1x 20kgs 60cm x 55cm x 13cm
- 1x 9kgs 128cm x 45cm x 13cm
- 1x 6kgs 48cm x 48cm x 43cm



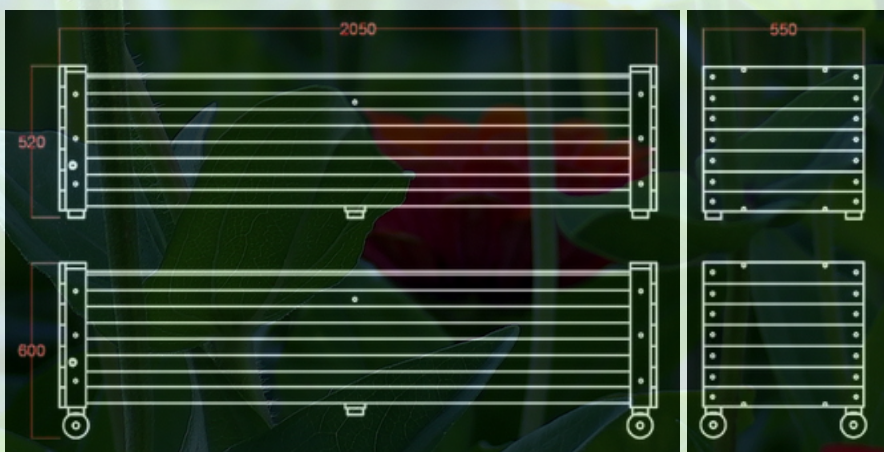
4-Cell Artesian range Eco Board Wicking planter box

Shipping Box Sizes - 4 Cell With Feet

- 1x 23kgs 96cm x 55cm x 13cm
- 1x 10kgs 83cm x 45cm x 13cm
- 1x 8.3kgs 48cm x 48cm x 43cm **Shipping**

Box Sizes - 4 Cell With Wheels

- 1x 25kgs 96cm x 55cm x 13cm
- 1x 10kgs 83cm x 45cm x 13cm
- 1x 8.3kgs 48cm x 48cm x 43cm



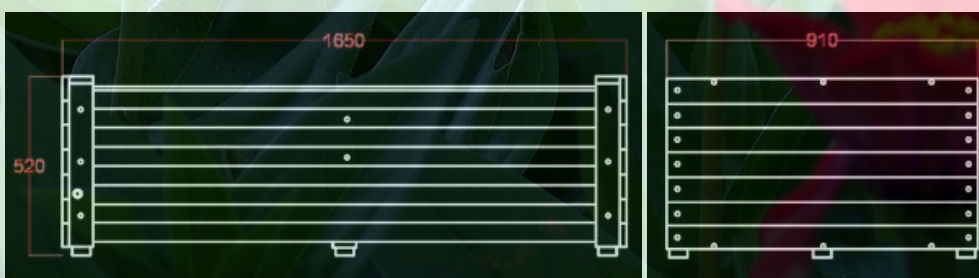
5-Cell Artesian range Eco Board Wicking planter box

Shipping Box Sizes - 5 Cell With Feet

- 1x 18kgs 60cm x 55cm x 13cm
- 1x 18kgs 203cm x 45cm x 13cm
- 1x 9.5kgs 48cm x 48cm x 43cm

Shipping Box Sizes - 5 Cell With Wheels

- 1x 20kgs 60cm x 55cm x 13cm
- 1x 18kgs 203cm x 45cm x 13cm
- 1x 9.5kgs 48cm x 48cm x 43cm



8-Cell Artesian range Eco Board Wicking planter box

Shipping Box Sizes - 8 Cell With Feet

- 1x 23kgs 96cm x 55cm x 13cm
- 1x 21kgs 163cm x 45cm x 13cm
- 1x 16kgs 48cm x 48cm x 43cm

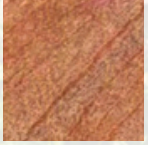
Materials

Unique designed steel channel powder-coated legs, which allows for easy assembly and strength.

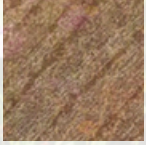
Stainless steel bolts WaterUps wicking cells made from 100% recycled material

Eco Board Colours

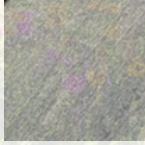
Sides are made from 92% recyclable materials and a fire rating BAL-40 Sides are available in 3 colours:



Jarrah

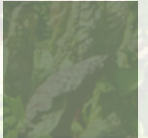


Black Bean



Ash Grey

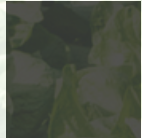
Colorbond Colours



Pale Eucalypt
Manor
Red



Paperbar
k

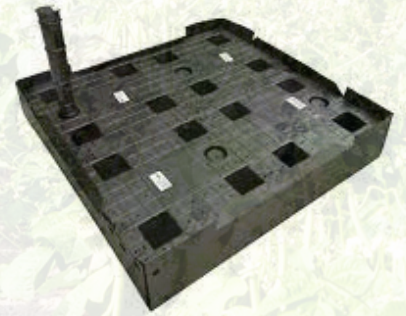


Monument



WaterUps Wicking

Made from 100% recycled material
Includes an Inlet Pipe to fill the reservoir and an
Overflow Pipe to reduce the risk of root rot.



Additional products

Lattice

To the back of the planter box, great for growing beans or a vertical garden for privacy and screening

Compost

Reduces waste, enriches soil, and supports sustainable gardening.



What is wicking?

Wicking is the movement of liquid by 'capillary action', where moisture is drawn upwards due to surface tension and the interaction of adhesive and cohesive forces. If you think of old-fashioned lanterns, the base of the wick would sit inside an oil or kerosene well and draw the oil up to the top of the wick so that it could burn when lit. A wicking garden bed works in a similar way. It uses wicks or "feet" to sit in a well of water to draw water and nutrients up into the lower levels of soil. From there they are taken up by the roots into the trunk, then the leaves, fruit and flowers of plant. In wicking beds, water is drawn up into the pore spaces in the soil to a height of about 350mm.

There, they use the term "sub-irrigated pots" or SIP's. In Australia, we use the terms "wicking" and "wicking beds". Wicking is a system that fall under the category of 'sub-irrigation', which include ebb and flow systems, flood floors, dutch trays and capillary mats. Importantly, wicking is the most versatile, efficient, and effective sub-irrigation system for residential, civil and commercial use for growing both ornamentals and edibles. With water in Australia a scarce resource, due to our climatic conditions and at times harsh growing environment, in recent decades there has been a renewed interest in wicking to help grow plants and keep them healthy. Wicking systems have also preformed very well in La Nina conditions on the east coast of Australia. Because of the overflow mechanism our wicking beds avoid water saturated soil.

Wicking garden beds eliminate the problem of deciding when and how much to water. Plants in a wicking bed can last up to 4 weeks or longer without additional watering. In contrast surface watering can require daily watering depending on climatic conditions. For people who manually do this, this can be very time-consuming, and you can end up being a slave to your garden. Few people have time for this, given the busy lives they lead. As a result, their gardens and plant suffer.

Planter box cross section

